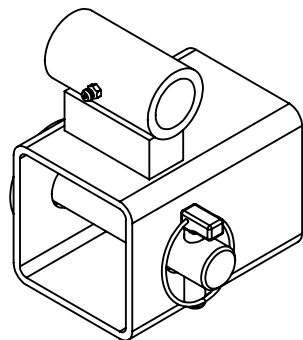
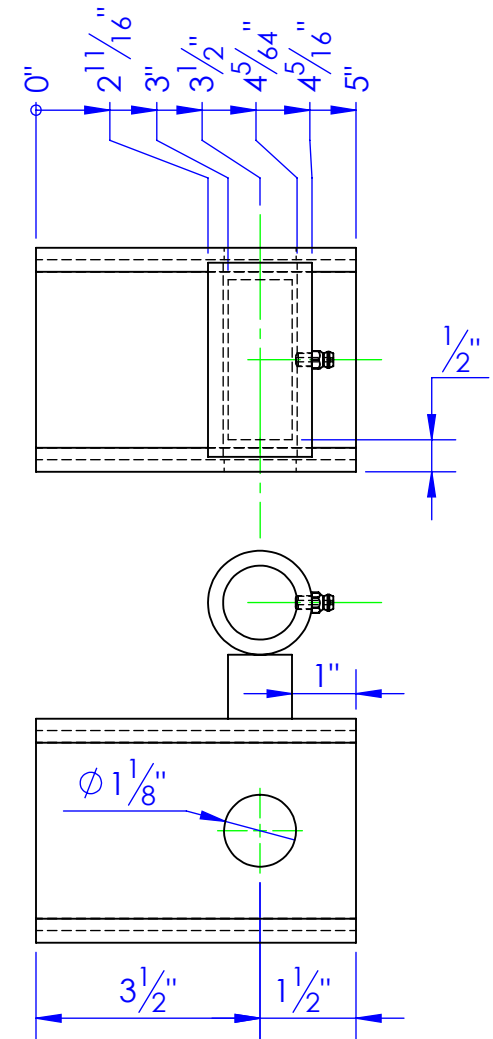
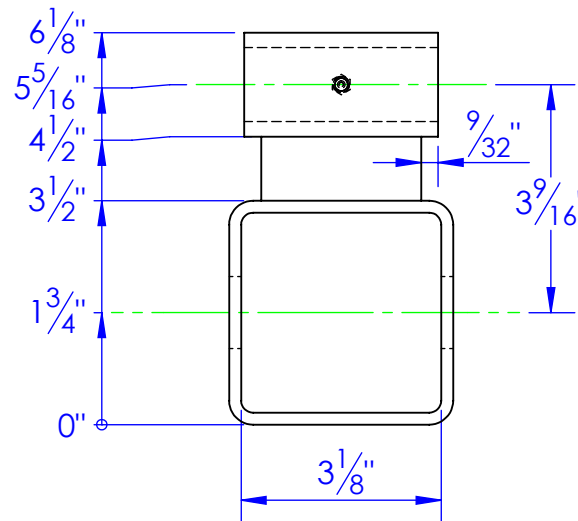
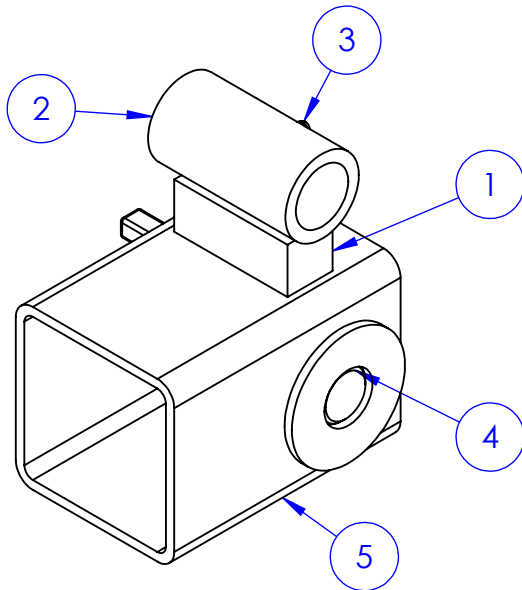


ITEM NO.	PART NUMBER	DESCRIPTION	Material	DRAWING #	QTY.
1	FI 1x1 L 2.5	LENGTH: 2-1/2"	FI 1x1	STOCK	1
2	FP-SB00-100	00 SPINNER BUSHING	MT 1.625x1.125	10-2500	1
3	HD-ZG .25-28 90	GREASE ZERK 1/4-28 STRAIGHT	STOCK	STOCK	1
4	RE-PN-C1x475	PIN, CON, 4-7/8"		10-1707	1
5	ST-ST-3.5 x .1875 L 5	LENGTH: 5"	ST-3-1/2 x 3/16"	STOCK	1

REVISIONS			
REV.	DESCRIPTION	DATE	APPROVED
B	UPDATED TO MATCH 3D MODEL	12/19/2012	



**REQD QTY: 2**

**PROPRIETARY AND CONFIDENTIAL**  
THE INFORMATION CONTAINED IN THIS DRAWING IS THE SOLE PROPERTY OF TRIPLE C INC. ANY REPRODUCTION IN PART OR AS A WHOLE WITHOUT THE WRITTEN PERMISSION OF TRIPLE C INC. IS PROHIBITED.

DIMENSIONS ARE IN INCHES  
TOLERANCES:  
FRACTIONAL  $\pm 1/16$   
ANGULAR: MACH  $\pm 1$  BEND  $\pm$   
TWO PLACE DECIMAL  $\pm 010$   
THREE PLACE DECIMAL  $\pm 005$

MATERIAL ---  
DO NOT SCALE DRAWING

NAME	DATE
DRAWN <b>HEATH</b>	12/19/2012
PART # <b>OP-SP-118 RISER</b>	
ASM #	
COMMENTS:	
<b>SPINNER RISER, 100 SERIES</b>	

P.O. BOX 248,  
SABETHA, KS 66534

**TRIPLE C**  
INC.

SIZE	DWG. NO.	REV.
<b>A</b>	<b>90-1611 B</b>	<b>B</b>
SCALE:1:3	WEIGHT: 6.09	SHEET 1 OF 1